

pakedgedevice&software inc.

WAP-W2
Enterprise-Class, High Power
Wireless Access Point

QUICK START

Version 1



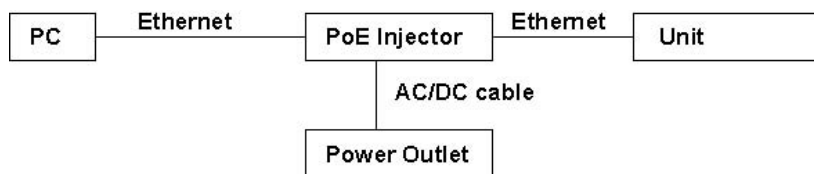
A. WAP-W2 Default Settings

1. IP Address 192.168.1.250
2. Username/Password- Disabled
3. SSID- pakedge
4. Channel- 6
5. Power Output- 16 dBm
6. Security- Disabled

B. Hardware Installation

1. Place the unit in an appropriate place using the mounting kit.
2. Run the Ethernet cable indoors and plug one end into the Wireless Access Point- **PWR+LAN IN**.
3. Plug the other end of the Ethernet cable into a PoE injector or PoE Switch (see PoE injector manual for completing the wiring at the PoE injector location).

This diagram depicts the hardware configuration using a PoE Injector



The Wireless Access Point should now be up and running with its

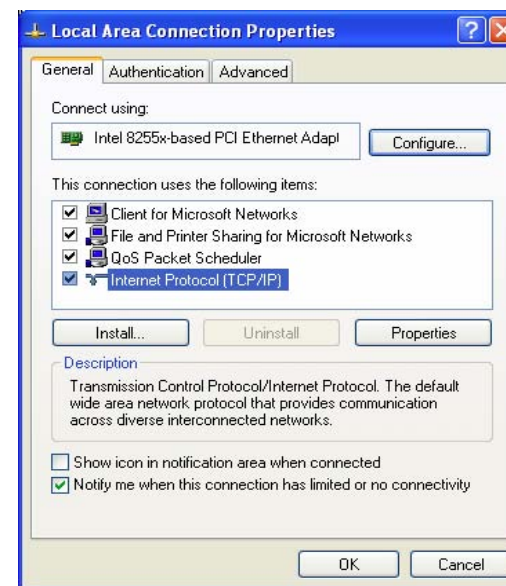
default out-of-the-box setting. It does not need any particular configuration to be functional. The Wireless Access Point can be configured through its website. To access the Wireless Access Point website, you will need an Ethernet adapter and a web browser such as Internet Explorer.

C. IP Address Configuration

This Wireless Access Point can be configured as a Bridge or Access Point. The default IP address of the Wireless Access Point is **192.168.1.250**. In order to log into this WAP, you must first configure the TCP/IP settings of your PC/Notebook

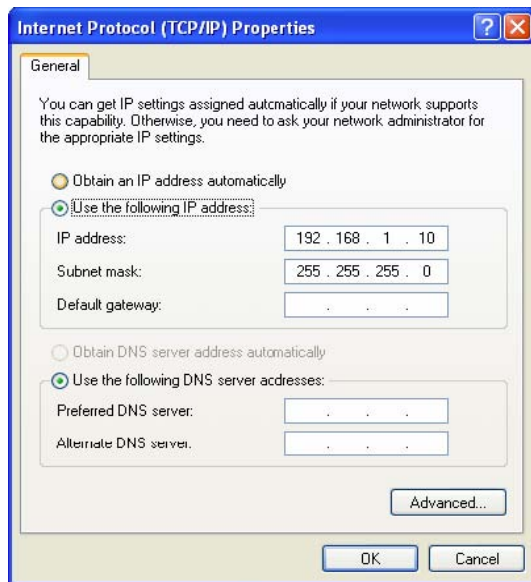
For Windows XP:

1. In the control panel, double click Network Connections and then double click on the connection of your Network Interface Card (NIC). You will then see the following screen



2. Select **Internet Protocol (TCP/IP)** and then click on the **Properties** button. This will allow you to configure the TCP/IP settings of your PC/Notebook.

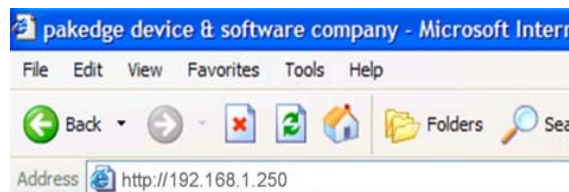
3. Select **Use the following IP Address** radio button and then enter the IP address and subnet mask. Ensure that the IP address and subnet mask are on the same subnet as the device. For example: Wireless Access Point IP address: **192.168.1.250**. PC IP address: **192.168.1.10**
PC subnet mask: **255.255.255.0**



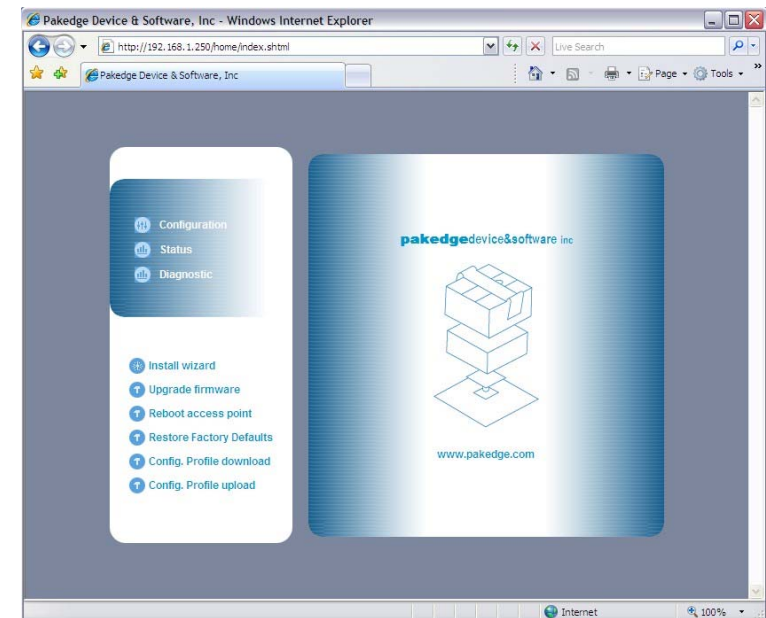
4. Click on the **OK** button to close this window, and once again to close LAN properties window.

D. Login/Configure the Hardware

1. To access the Wireless Access Point's configuration screen, open your web browser.
2. In the address bar of the web browser, enter **http://192.168.1.250** and hit the Enter key.



3. The website of the Wireless Access Point should appear



For further information and details beyond the Quick Start Guide, please refer to the User Manual on our website-
<http://www.pakedge.com/usermanual.php>

E. Technical Support

Please visit our website for up-to-date support information:

Website: www.pakedge.com

Email: support@pakedge.com

CONTACT INFORMATION:

Pakedge Device & Software Inc.
1011 Edwards Road
Burlingame, CA 94010