

pakedgedevice&software inc.

WAP-C2

Enterprise-Class, In-Ceiling Wireless Access Point

Preconstruction/Attic-Install Bracket Installation Guide

Version 1.27



**FCC Declaration of Conformity**

Packedge Device & Software, PO Box 1973, San Mateo, CA 94401, declares under sole responsibility that the WAP-C2 complies with 47 CFR Parts 2 and 15 of the FCC Rules as a Class B digital device. This device complies with Part 15 of FCC Rules. Operation of the device is subject to the following two conditions: (1) This device may not cause harmful interference, and (2) this device must accept any interference that may cause undesired operation.

FCC Compliance Class B Digital Device

This equipment has been tested and found to comply with the limits for a Class B digital device, pursuant to Part 15 of the FCC Rules. These limits are designed to provide reasonable protection against harmful interference in a residential environment. This equipment generates, uses, and can radiate radio frequency energy and, if not installed and used in accordance with the instructions, may cause harmful interference to radio communications. However, there is no guarantee that interference will not occur in a particular installation. If this equipment does cause harmful interference to radio or television reception, which can be determined by turning the equipment off and on, the user is encouraged to try to correct the interference by one of the following measures:

- Reorient or relocate the receiving antenna.
- Increase the separation between the equipment and receiver.
- Connect the equipment into an outlet on a circuit different from that to which the receiver is connected.
- Consult the dealer or an experienced radio/TV technician for help.

Wireless LAN and your Health

The WAP-C2, like other radio devices, emits radio frequency electromagnetic energy, but operates within the guidelines found in radio frequency safety standards and recommendations.

FCC Certification

The WAP-C2 contains a radio transmitter. Accordingly, it has been certified as compliant with 47 CFR Part 15 of the FCC Rules for intentional radiators. Products that contain a radio transmitter are labeled with FCC ID and the FCC logo.

WARNING: TO PREVENT FIRE OR SHOCK HAZARD, DO NOT EXPOSE THIS PRODUCT TO RAIN OR MOISTURE. THE UNIT MUST NOT BE EXPOSED TO DRIPPING OR SPLASHING WATER. CAUTION: DO NOT OPEN THE UNIT. DO NOT PERFORM ANY SERVICING OTHER THAN THAT CONTAINED IN THE INSTALLATION AND TROUBLESHOOTING INSTRUCTIONS. REFER ALL SERVICING TO QUALIFIED SERVICE PERSONNEL. CAUTION: THIS DEVICE MUST BE INSTALLED AND USED IN STRICT ACCORDANCE WITH THE MANUFACTURER'S INSTRUCTIONS AS DESCRIBED IN THE USER DOCUMENTATION THAT COMES WITH THE PRODUCT. WARNING: POSTPONE INSTALLATION UNTIL THERE IS NO RISK OF THUNDERSTORM OR LIGHTNING ACTIVITY IN THE AREA.

SAFETY PRECAUTIONS:

When using this device, always follow basic safety precautions, to reduce the risk of fire, electric shock and injury to persons, including the following:

- Read all of the instructions (listed here and/or in the user manual) before you operate this equipment.
- Comply with all warning and caution statements in the instructions.
- Retain the instructions for future reference.
- Observe all warning and caution symbols that are affixed to this equipment.
- Comply with all instructions that accompany this equipment.
- Upon completion of any service or repairs to this product, ask the service technician to perform safety checks to determine that the product is in safe operating condition.
- Installation of this product must be in accordance with national wiring codes and conform to local regulations.
- Avoid using this product during an electrical storm. There may be a risk of electric shock from lightning. For added protection for this product during a lightning storm, or when it is left unattended and unused for long periods of time, unplug the power supply, and disconnect the CAT5e to the WAP-C2 at the POE. This will prevent damage to the product due to lightning and power surges.
- Give particular attention to all safety precautions.
- Operate this product only from the type of power source indicated on the product's marking label. If you are not sure of the type of power supplied to your home, consult your dealer or local power company.
- It is recommended that the customer install an AC surge protector in the AC outlet to which this device is connected. This is to avoid damage to the equipment from lightning strikes and other electrical surges.
- Place POE Injector unit to allow for easy access when disconnecting the power cord/adaptor of the device from the AC wall outlet.
- Wipe the unit with a clean, dry cloth. Never use cleaning fluid or similar chemicals. Do not spray cleaners directly on the unit or use forced air to remove dust.
- Keep the device away from excessive heat and humidity and keep the device free from vibration and dust.
- Do not directly cover the device, or block the airflow to the device with insulation or any other objects.



Installing the Preconstruction/Attic-Install Bracket for Preconstruction Installation

NOTE: For new construction, the optional Preconstruction Bracket can be mounted after framing and before sheet rock installation. Also, note there MUST be a minimum of 4.5 inches of mounting depth in the stud bay.

1. Run a Category 5e (CAT5e) Ethernet cable from where the Wireless Access Point will be installed to the location where the POE Module will be located. Make sure to leave extra cable at both ends. NOTE: The maximum length of the CAT5e cable should be 328 feet. (This is the recommended limit of Ethernet).
2. Place the Bracket against the bottom of the ceiling studs at the desired location. Note the "www.pakedge.com" logo on the Bracket is facing outwards, towards you, and the flanges are pointed inward towards the wall.

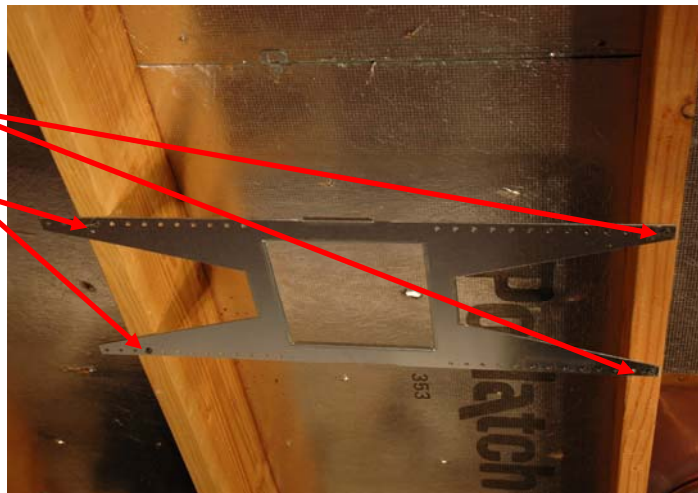
Flanges pointed inward towards the wall

Logo faces outward from the wall



3. Insert the four screws into the studs to secure the Bracket. For the best results, ensure the Bracket's square opening is properly square to major walls and/or other landmarks.

Insert four screws to secure the Bracket



4. Install sheet rock over preconstruction bracket and trim out a square opening using the preconstruction bracket as a guide.



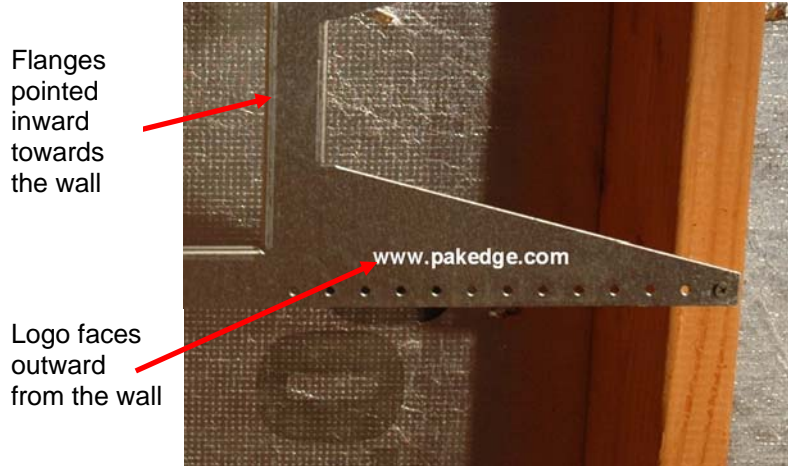
5. To complete the installation of the Wireless Access Point, go to Step 3 of Section 4.2.1 of the User Manual.



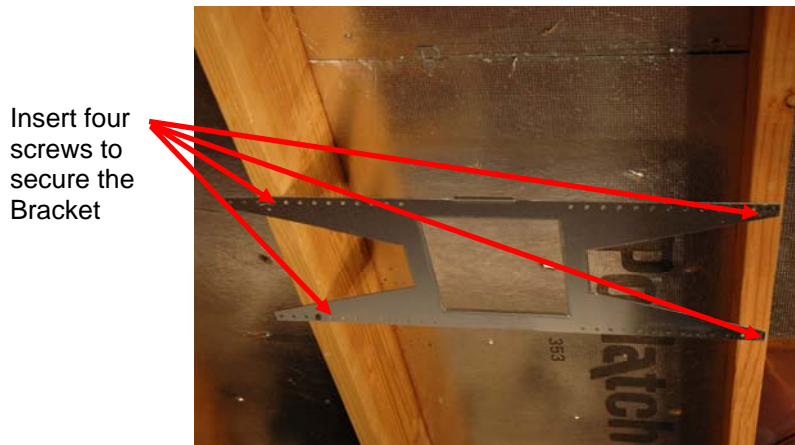
Installing the Preconstruction/Attic-Install Bracket for Attic Installation

WARNING- Attic ambient temperature must remain below 120 ° F

1. Place the Bracket against the bottom of the ceiling studs at the desired location. Note the "www.pakedge.com" logo on the Bracket is facing outwards, towards you, and the flanges are pointed inward towards the wall.



2. Insert the four screws into the studs to secure the Bracket. For the best results, ensure the Bracket's square opening is properly square to major walls and/or other landmarks.

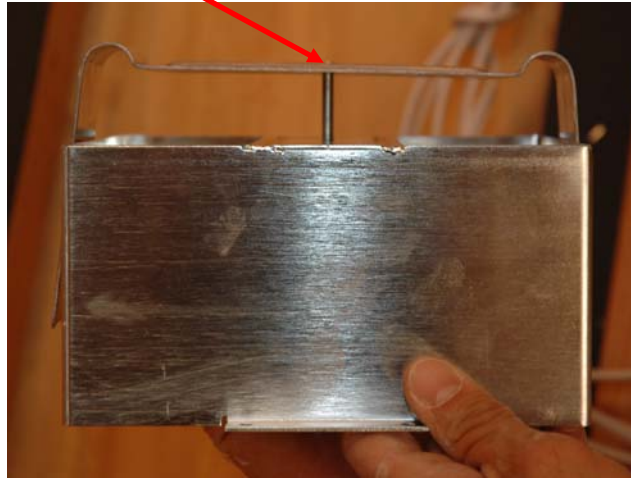


3. Prepare the Ceiling Mount Housing for insertion by attaching the wing bracket with the provided Wing Bracket Screw (use the 10-24 x 1.25 inches long screw).

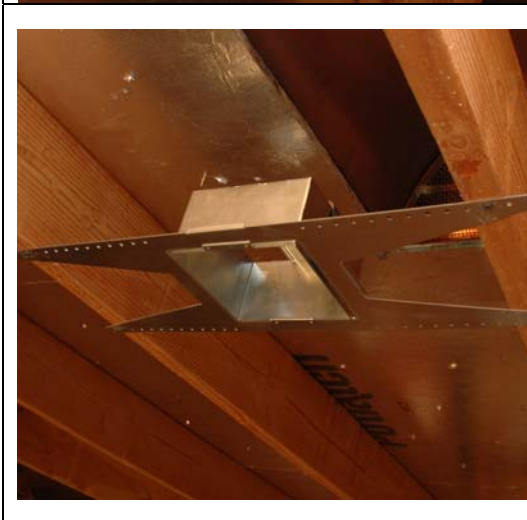


4. Before inserting the Ceiling Mount Housing into the bracket, loosen the Wing Bracket screw until the end of the screw is flush with the surface of the Wing Bracket.

Flush With Surface

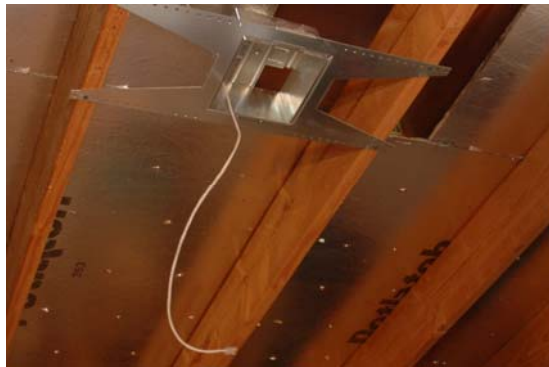


5. Holding the Ceiling Mount Housing as shown in the diagram, push the Ceiling Mount Housing into the hole until the two front flanges rest on the wall back surface.





6. Push the Wing Bracket further into the wall direction until each side of the Wing Bracket pops outward.
7. Straighten out the bracket so that it is perpendicular to the ceiling mount strap. Tighten the Wing Bracket screw so that the Wing Bracket sits firmly into the back of the Preconstruction/Attic-Install Bracket and the Ceiling Mount Housing is secure.
8. Run a Category 5e (CAT5e) Ethernet cable from where the Wireless Access Point will be installed to the location where the POE Module will be located. Make sure to leave extra cable at both ends. NOTE: The maximum length of the CAT5e cable should be 328 feet. (This is the recommended limit of Ethernet).



9. Prepare the Wireless Access Point for installation by 1) attaching the four Friction Springs with the provided screws (2/56x0.19" long, pan head screw), 2) The Friction Springs need to be in the upright position as shown in the diagram. Important- don't over tighten the Friction Spring screws; tighten enough so the Friction Springs remain upright.

Friction
Springs
Are
Upright



10. Attach the steel eye of the safety strap to the WAP-C2 housing using the attachment screw. Insert the CAT5e cable into the Power-Ethernet port (P-LAN-in).



11. Insert the WAP-C2 into the Ceiling Mount Housing until the Antenna Cover is flush with the wall surface. **Note:** Ensure all four Friction Springs are inside the Ceiling Mount Housing's inner walls before fully inserting the Wireless Access Point.



12. Remove the Bracket's protruding edges by bending upward and/or shearing them off.



13. Finally, to remove the Wireless Access Point, reverse the above directions

14. To configure the Wireless Access Point, go to Section 4.2.2 of the User Manual.

Technical Support

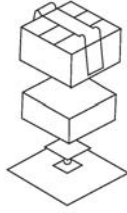
Please visit our website for up-to-date support information:

Website: www.pakedge.com
Email: support@pakedge.com

CONTACT INFORMATION:

Pakedge Device & Software Inc.
PO Box 1973
San Mateo, CA 94401

pakedgedevice&software inc.



1011 Edwards Road
Burlingame, CA 94010

Visit Us At:
www.pakedge.com

© Pakedge Device & Software Inc. 2007 – All Rights Reserved