



packedgedevice&software inc.

WAP-W3G

Enterprise-Class, Ultra High Power
Wireless Access Point & Client Bridge

QUICK START

Version 1



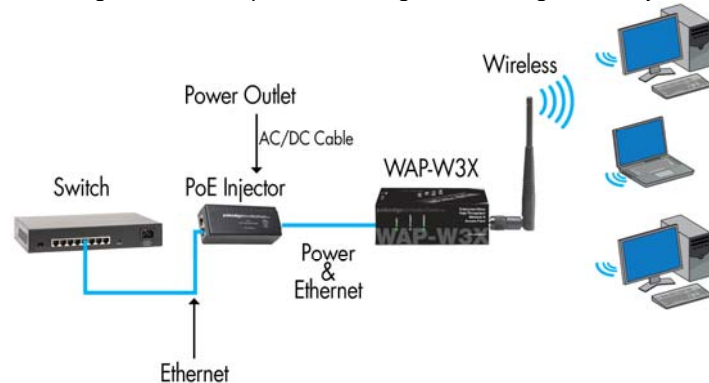
A. WAP-W3G Default Settings

1. Wireless Access Point mode
2. IP Address for Access Point Mode-192.168.1.250
3. Username/Password- packedge/packedgea
4. SSID- Packedge1
5. Power Output- High
6. Security- Disabled

B. Hardware Installation

1. Place the unit in an appropriate place using mounting kit.
2. Run the Ethernet cable and plug one end into the **PWR + LAN IN** port of the WAP-W3G.
3. Plug the other end of the Ethernet cable into a PoE injector or PoE Switch (see PoE injector manual for completing the wiring at the PoE injector location). **Note- use either the DC power supply or PoE injector- damage may occur if both power options are used.**

The diagram below depicts the configuration using a PoE Injector.



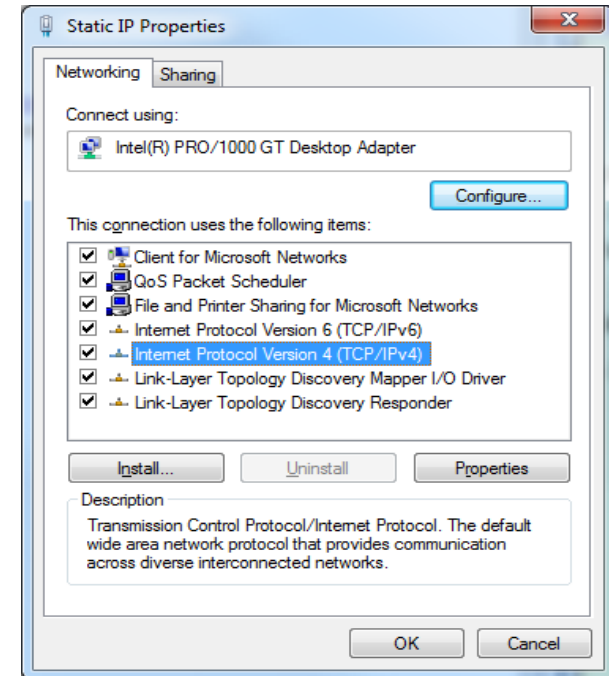
The Wireless Access Point should now be up and running with its default out-of-the-box setting. It does not need any particular configuration to be functional. The Wireless Access Point can be configured through its website. To access the WAP-W3G website, you will need an Ethernet adapter and a web browser such as Internet Explorer.

C. IP Address Configuration

The default IP address of the Wireless Access Point is **192.168.1.250**. In order to log into this WAP, you must first configure the TCP/IP settings of your PC/Notebook.

For Windows 7:

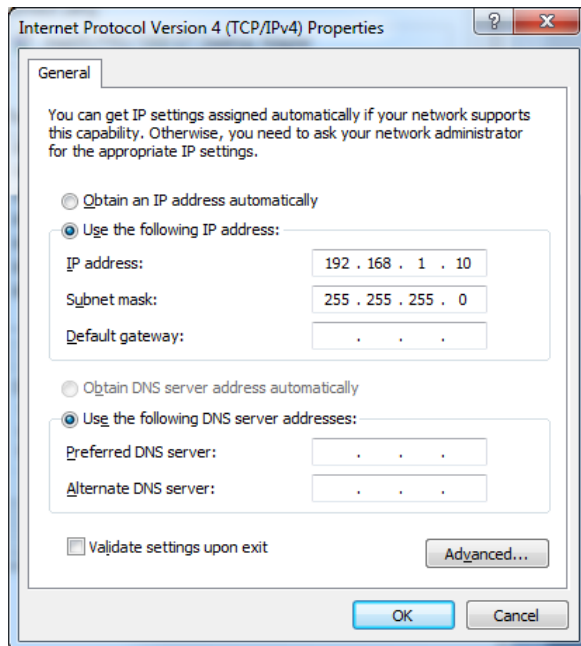
1. In the control panel, double click Network Connections and then double click on the connection of your Network Interface Card (NIC). You will then see the following screen:



2. Select **Internet Protocol Version 4 (TCP/IPv4)** and then click on the **Properties** button. This will allow you to configure the TCP/IP settings of your PC/Notebook.
3. Select **Use the following IP Address** radio button and then enter



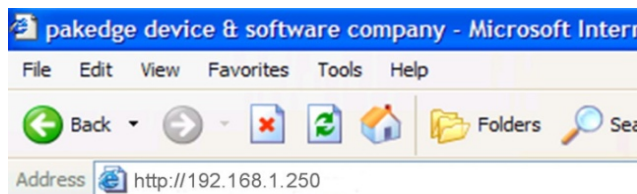
the IP address and subnet mask. Ensure that the IP address and subnet mask are on the same subnet as the device. For example:
Wireless Access Point IP address: **192.168.1.250** PC IP address:
192.168.1.10 PC subnet mask: **255.255.255.0**



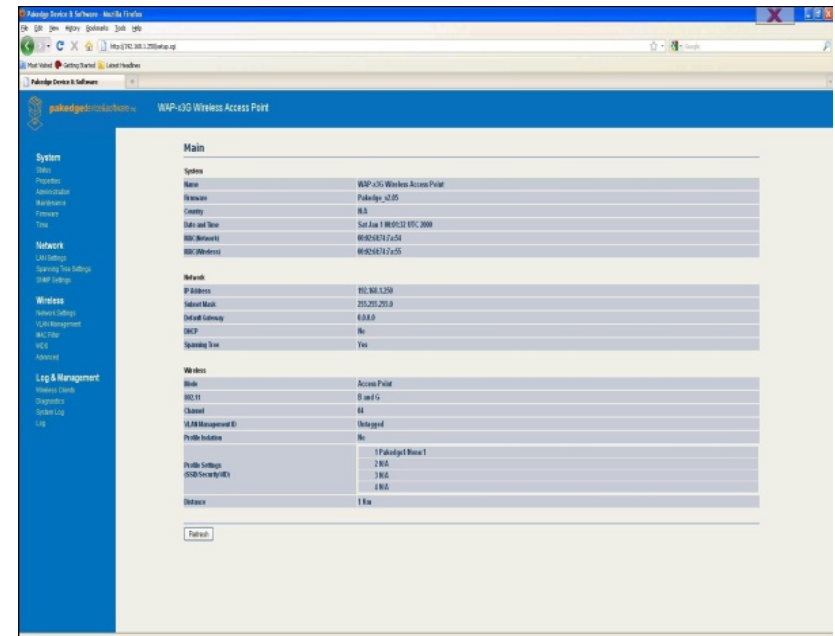
- Click on the **OK** button to close this window, and once again to close LAN properties window.

D. Login/Configure the Hardware

- To access the Wireless Access Point's configuration screen, enter **http://192.168.1.250** into your web browser.



- The website of the Wireless Access Point should appear as shown below.



E. Client Bridge, Repeater and WDS Modes

To access the other modes, click on **Properties**, under the **System** tab then select the mode desired.

For further information and details beyond the Quick Start Guide, please refer to the User Manual on our website-
<http://www.pakedge.com/usermanual.php>

F. Technical Support

Please visit our website for up-to-date support information:
Website: **www.pakedge.com**
Email: **support@pakedge.com**

CONTACT INFORMATION:

Pakedge Device & Software Inc.
1011 Edwards Road
Burlingame, CA 94010

© Pakedge Device & Software Inc. 2010 – All Rights Reserved