

WAP-O3 QUICK START

Features for the WAP-O3



Factory Reset Button
- To reset to factory defaults, press and hold for 10 secs

Antenna Connector - N-Type Female



Water Tight RJ-45 Connector:
- Insert RJ-45 until it engages
- Tighten seal nut until no thread are visible or rubber ring forms a tight seal. Note, you will hear clicking at first as the thread firmly engages



LED's

Because the WAP-O3 is installed outdoors and in inaccessible locations, the WAP-O3 does not have visible LED's. Instead, the WAP-O3's operation status can be determined by its Power/PoE injector. If using Pakedge's PoE injectors/Switch, please see below. If using another manufacturer's PoE Injector, please refer to their manual.

pakedge device & software inc.

1011 Edwards Road
Burlingame, CA 94010
Main- 877-274-6100
Fax- 650-685-5520



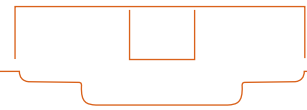
sales@pakedge.com
www.pakedge.com



Current Indicator LED will change from AMBER to GREEN when WAP is drawing current

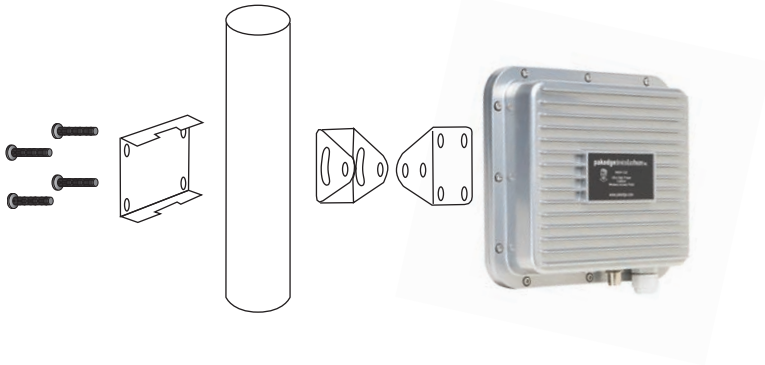


Green LEDs indicate Power, Wireless, and Ethernet are functional

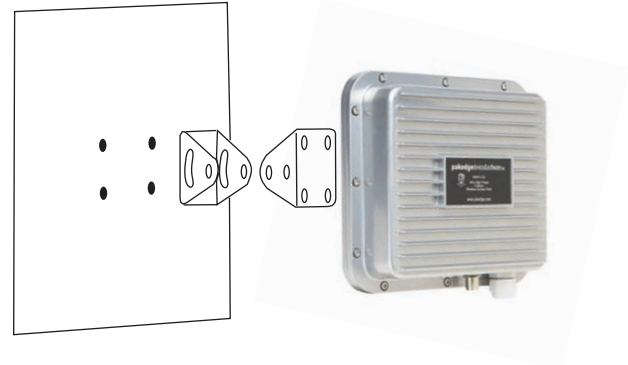


Mount the WAP-O3 in upright position with the Antenna jack, RJ-45 jack, and reset switch pointed downward. This way the WAP-O3 maintains its water tightness.

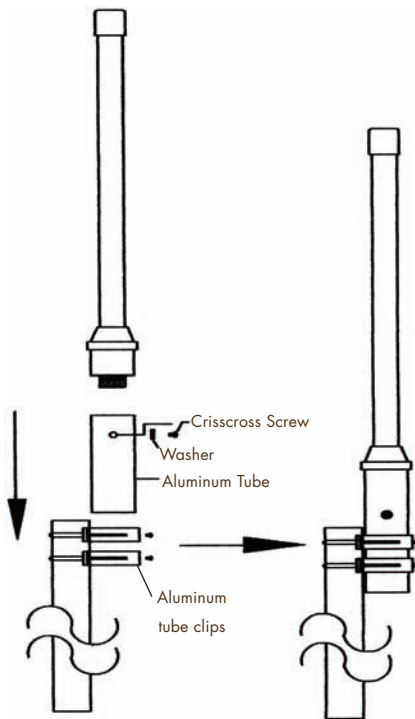
Pipe Mounting



Wall Mounting

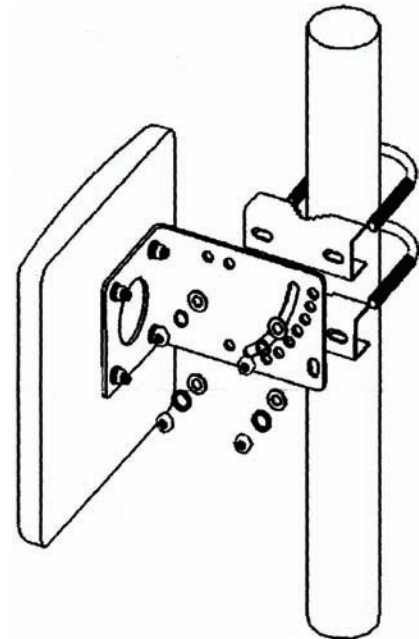


Omni Antenna Option



Omni antenna can be mounted directly to a wall by screwing aluminum tube clips directly to wall.

Panel Antenna Option



If mounting panel antenna to a wall, attach antenna to a pole and then attach pole to wall. This will ensure that the panel can be correctly pointed to its desired area of use.

pakedgedevice&software inc.

1011 Edwards Road
Burlingame, CA 94010
Main- 877-274-6100
Fax- 650-685-5520



sales@pakedge.com
www.pakedge.com

pakedgedevice&software inc.

WAP-O3

Enterprise-Class, Ultra High Power Outdoor Wireless Access Point & Client Bridge

QUICK START

Version 1



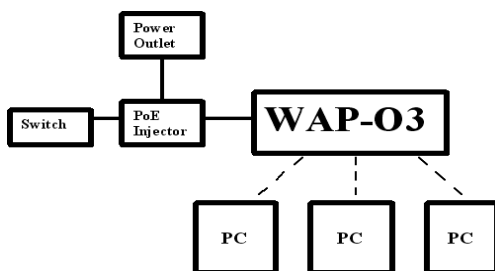
A. WAP-O3 Default Settings

1. Wireless Access Point mode
2. IP Address 192.168.1.250
3. Username/Password- None
4. SSID- pakedge
5. Power Output- High
6. Security- Disabled

B. Hardware Installation

1. Place the unit in an appropriate place using the mounting kit.
2. Run the Ethernet cable and plug one end into the Wireless Access Point.
3. Plug the other end of the Ethernet cable into a PoE injector or PoE Switch.

This diagram depicts the configuration using a PoE Injector.



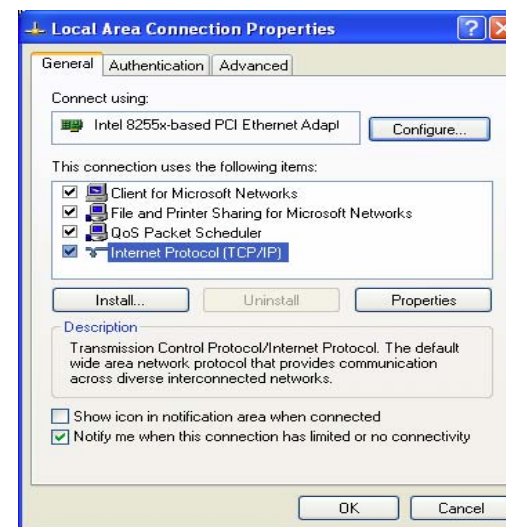
The Wireless Access Point should now be up and running with its default out-of-the-box setting. It does not need any particular configuration to be functional. The Wireless Access Point can be configured through its website. To access the WAP-O3 website, you will need an Ethernet adapter and a web browser such as Internet Explorer.

C. IP Address Configuration

The WAP-O3 can be configured as a Client Bridge or Access Point. The default IP address of the Wireless Access Point is **192.168.1.250**. In order to log into this WAP, you must first configure the TCP/IP settings of your PC/Notebook

For Windows XP:

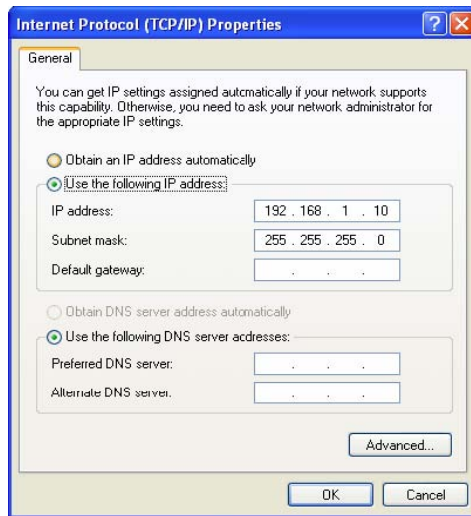
1. In the control panel, double click Network Connections and then double click on the connection of your Network Interface Card (NIC). You will then see the following screen



2. Select **Internet Protocol (TCP/IP)** and then click on the **Properties** button. This will allow you to configure the TCP/IP settings of your PC/Notebook.



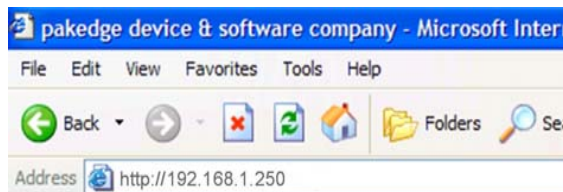
3. Select **Use the following IP Address** radio button and then enter the IP address and subnet mask. Ensure that the IP address and subnet mask are on the same subnet as the device. For example: Wireless Access Point IP address: **192.168.1.250** PC IP address: **192.168.1.10** PC subnet mask: **255.255.255.0**



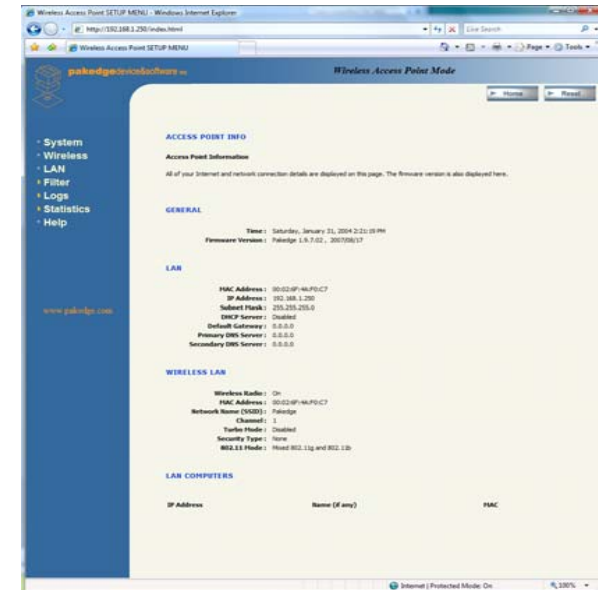
4. Click on the **OK** button to close this window, and once again to close LAN properties window.

D. Login/Configure the Hardware

- a. To access the WAP-O3's configuration screen, enter **http://192.168.1.250** into your web browser.



- b. The website of the Wireless Access Point should appear.



E. Client Bridge Mode

To access Bridge mode, click on **System**, then **Administrator Settings**. Click on **Switch Device to Bridge Mode**. Then enter 192.168.1.251 into your web browser.

For further information and details beyond the Quick Start Guide, please refer to the User Manual on our website- <http://www.pakedge.com/usermanual.php>

F. Technical Support

Please visit our website for up-to-date support information:

Website: www.pakedge.com

Email: support@pakedge.com

CONTACT INFORMATION:

Pakedge Device & Software Inc.
1011 Edwards Road
Burlingame, CA 94010

© Pakedge Device & Software Inc. 2008 – All Rights Reserved